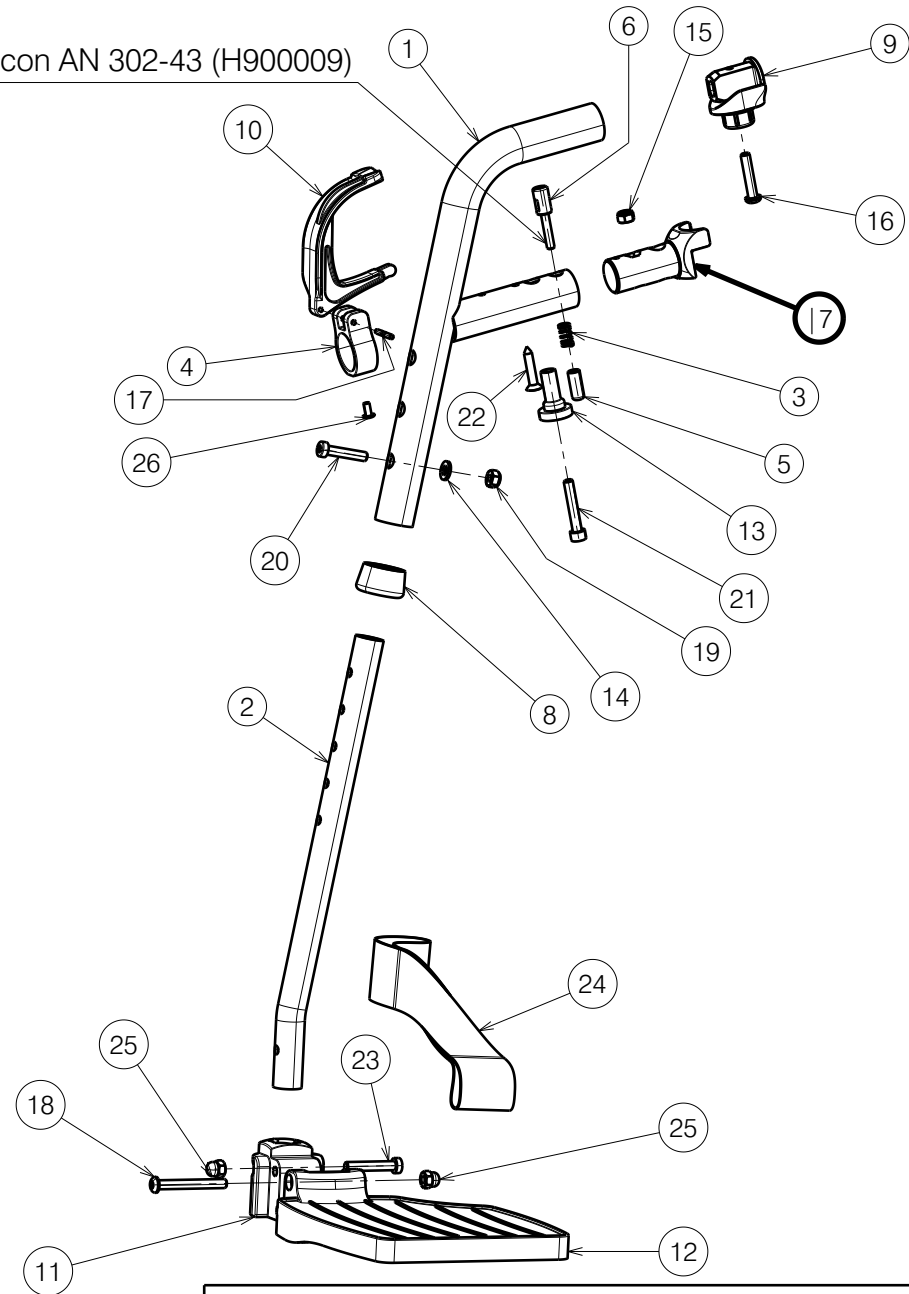


No.	Plan	Article	Qty
1	YC01267	1C407...	1
2	Y005459	F003257	1
3	XC00142	3990576	1
4	XC00300	3991091	1
5	XC00304	3991093	1
6	XC00305	3991094	1
7	XC00381	3991544	1
8	X002137	1992415	1
9	X004414	1904130	1
10	X004418	1904207	1
11	X004454	1904474	1
12	X004570 (39-43) L	1904646	1
	X004571 (39-43) R	1904647	1
	X004453 (44-46) L	1904210	1
	X004457 (44-46) R	1904475	1
	X004572 (48-52) L	1904648	1
	X004573 (48-52) R	1904649	1
13	X004660	1905195	1
14	D6,4 DIN125A	2994414	1
15	M6 DIN985	1001680	1
16	M6x30	1009588	1
17	D3x24 DIN1475	1905640	1
18	M6x50 Black	2994965	1
19	M6 DIN985 Black	2994063	1
20	M6x30 DIN7984 Black	1915416	1
21	M6x35 DIN912	1001496	1
22	Screw 5.3x25	H016007	1
23	M6x35 DIN7984 Black	2994654	1
24	Belt	1905642	1
25	M6 DIN986 Black	2994059	2
26	4x8 DIN7337	1992805	1

Use Weicon AN 302-43 (H900009)



* Only right side (right footrest) depicted

FOOTREST FOR V500 ACTIVE			
Scale:	1:4	Drafted	Verified
Date	2023-01-09	17/05/2023	17/05/2023
Initials	AZ	PM	AS

Plan No. E00048657/D.1